

DUCTABLE AIR-HANDLED UNITS

Series	UTW	Version	UTW	Model	153
---------------	------------	----------------	------------	--------------	------------

Cooling	Heating
----------------	----------------

Capacity				
total cooling capacity	[kW]	5,02	heating capacity	[kW]
sensible cooling capacity	[kW]	5,01		
Dehumidification	[g/h]	0		

Air							
Inlet	Temp. DB	[°C]	24,0	Inlet	Temp. DB	[°C]	-
	Temp. WB	[°C]	17,0				
	relative humidity	[%]	50				
water outlet	Temp. DB	[°C]	16,3	water outlet	Temp. DB	[°C]	-
	Temp. WB	[°C]	14,3				
	relative humidity	[%]	80				
Flow rate		[m³/h]	2000	Flow rate		[m³/h]	-
Speed			Med	Speed			

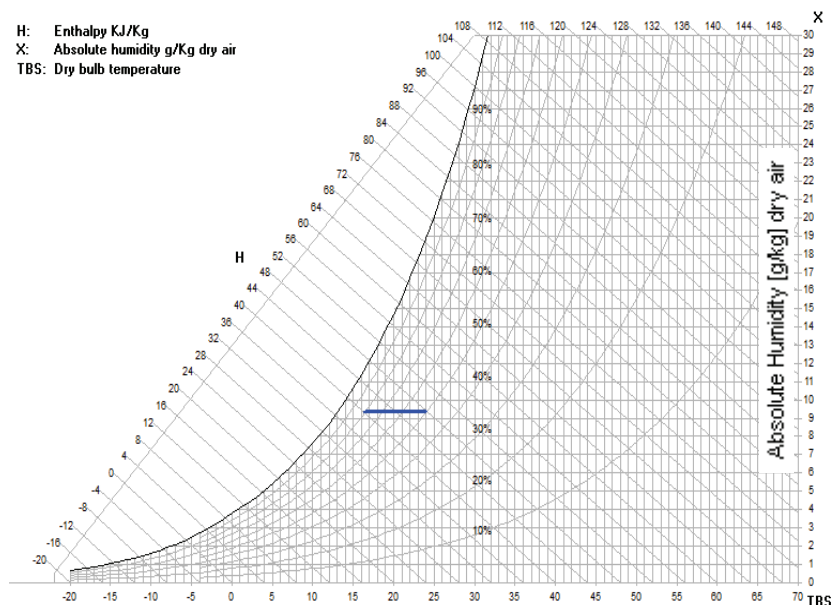
Fluid							
Flow rate		[l/h]	863	Flow rate		[l/h]	-
Water pressure drop		[kPa]	4,3	Water pressure drop		[kPa]	-
Inlet	Temperature	[°C]	10,0	Inlet	Temperature	[°C]	-
water outlet	Temperature	[°C]	15,0	water outlet	Temperature	[°C]	-
Type			Water	Type			

Dimensions and Weight			Other Data		
A	[mm]	1345	power supply	[V/Ph/Hz]	230/1/50
B	[mm]	540	Absorbed power	[kW]	0,11
C	[mm]	325	absorbed current	[A]	1,40
D	[mm]	-	Sound pressure	[dB(A)]	36
E	[mm]	-	Sound power	[dB(A)]	46
Weight	[kg]	65	Static pressure	[Pa]	62

Sound pressure measured at a distance of 1 meter and with reverberation time of 0,5 s

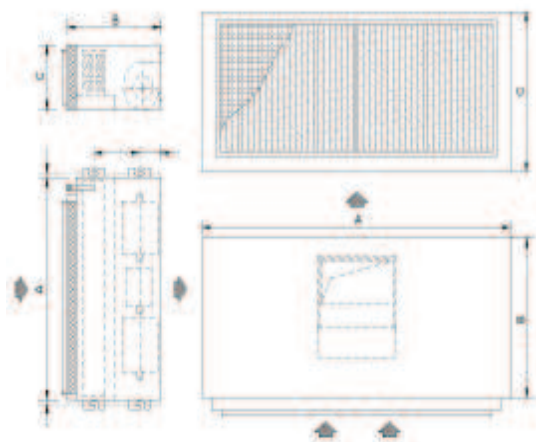


H: Enthalpy KJ/Kg
X: Absolute humidity g/Kg dry air
TBS: Dry bulb temperature



DUCTABLE AIR-HANDLED UNITS

Terminal units series UTW



Structure

In galvanized sheet metal (63 ÷ 274) and prepainted sheet metal (333 ÷ 544), entirely covered in heat / sound insulation material.

Fans

Centrifugal type with double intake, statically and dynamically balanced to reduce vibration and noise to a minimum, directly coupled with single-phase 3-speed electric motor (63 ÷ 274) with belt and pulley transmission, connected to single-speed 3-speed e

Condensing coil

In copper tubes and aluminium fins, complete with drain pan.

Air filter

Made of recyclable syntetic material class EU3; inspection is foreseen from the lower part.

Electric panel

Comprising a terminal board for wiring into room control panel and to power supply.

Accessories

Filtering section; delivery flange; intake grill plus air filter; delivery grill with adjustable finns; intake plenum; mixture section with shutter; delivery plenum; delivery plenum for flexible ducts; section for 4 pipe system; heating section with elec